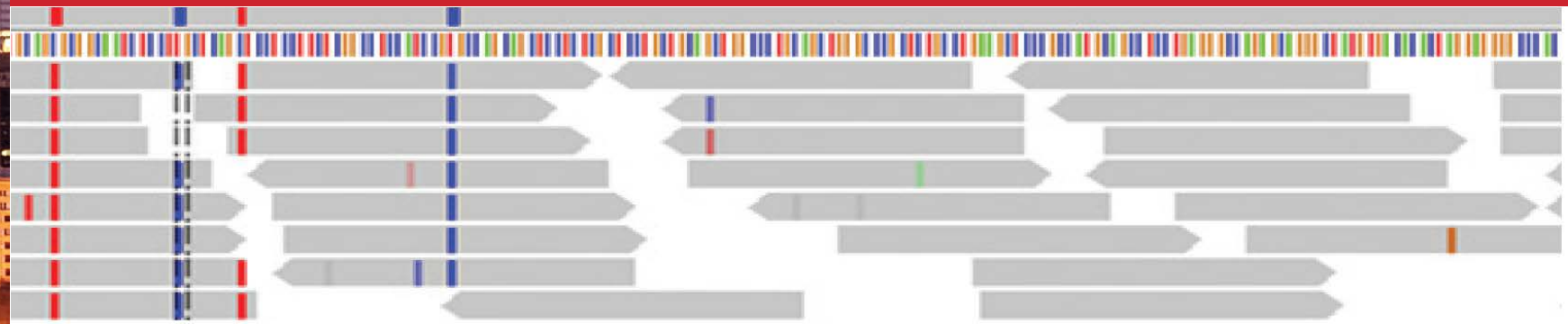


Molecular Genetics of Hematopoietic Neoplasms



Workshop Panel meeting: April 22-24, 2017

Daniel Arber, MD

Magdalena Czader, MD PhD

Falko Fend, MD

Robert Hasserjian, MD

Frank Kuo, MD PhD

Megan Lim, MD PhD

Miguel Piris, MD

Olga Weinberg, MD





It's here!!!

**WHO Blue Book printing completed TODAY (7 September)
Now available for purchase!**

From all countries

WHO Press
World Health Organization
1211 Geneva 27
Switzerland
Tel. +41 22 791 3264
Fax +41 22 791 4857
bookorders@who.int
www.who.int/bookorders/

From the USA

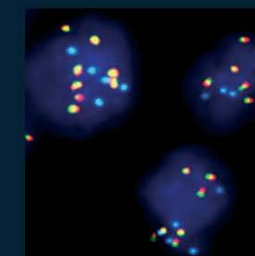
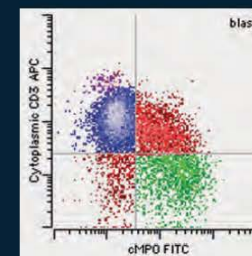
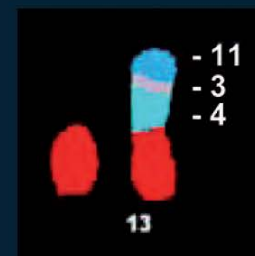
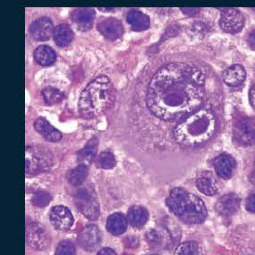
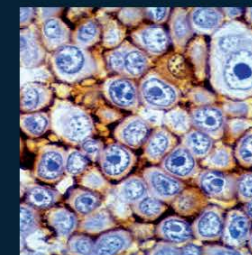
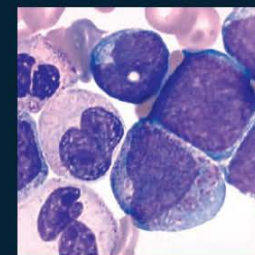
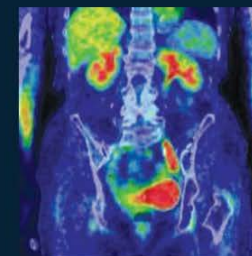
Stylus Publishing, LLC
22883 Quicksilver Drive PO Box 605
Herndon VA 20172-05
Tel. +1 800 232 0223
or +1 703 661 1581
Fax +1 703 661 1501
stylusmail@presswarehouse.com
www.styluspub.com

From Canada

Renouf Publishing Company
22 – 1010 Polytek Street
Ottawa ON K1J 9J1
Tel. +1 866 767 6766
Fax +1 613 745 7660
orders@renoufbooks.com
www.renoufbooks.com

WHO Classification of Tumours of Haematopoietic and Lymphoid Tissues

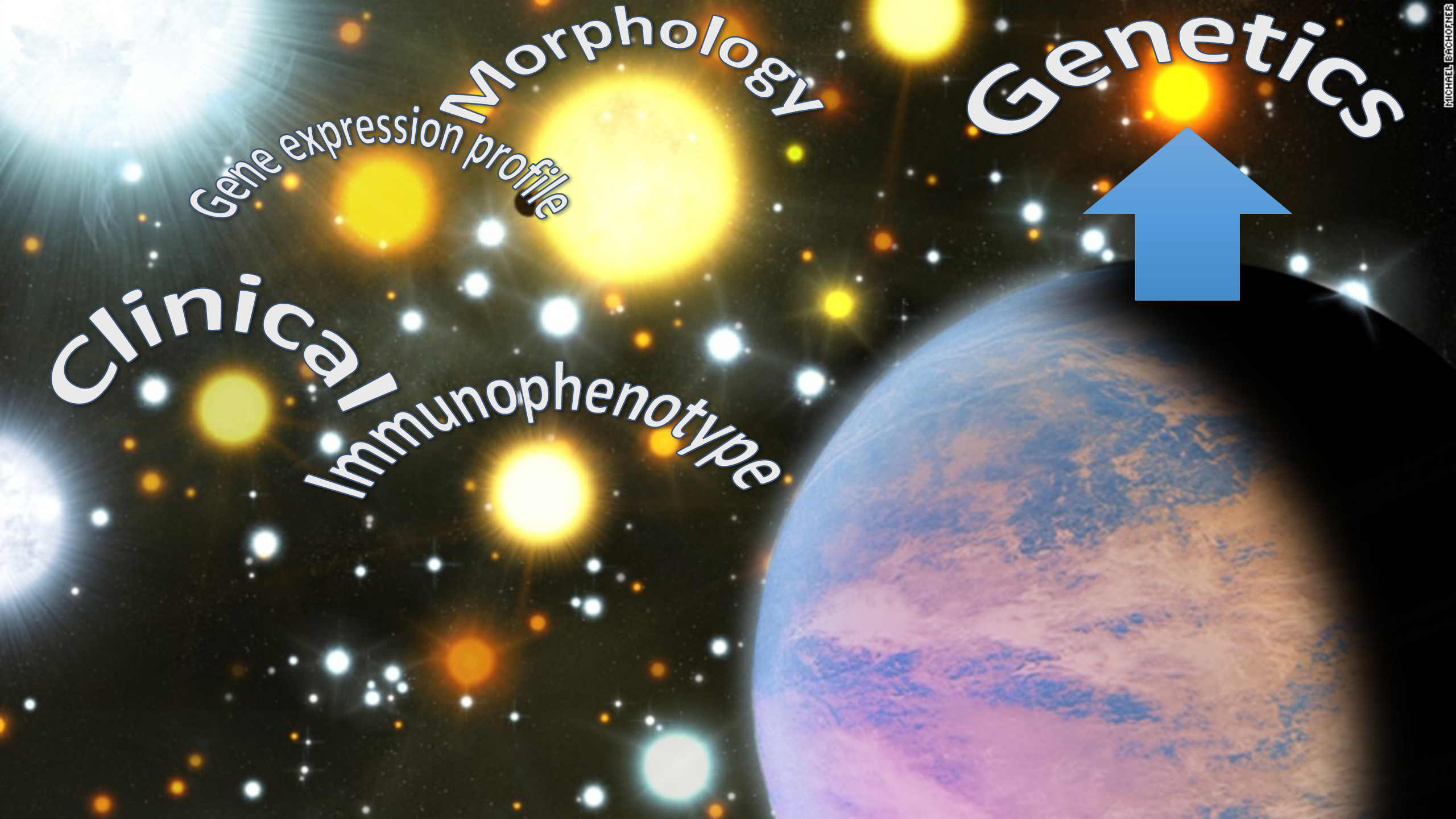
Steven H. Swerdlow, Elias Campo, Nancy Lee Harris, Elaine S. Jaffe, Stefano A. Pileri,
Harald Stein, Jürgen Thiele, Daniel A. Arber, Robert P. Hasserjian,
Michelle M. Le Beau, Attilio Orazi, Reiner Siebert



WHO

Morphology





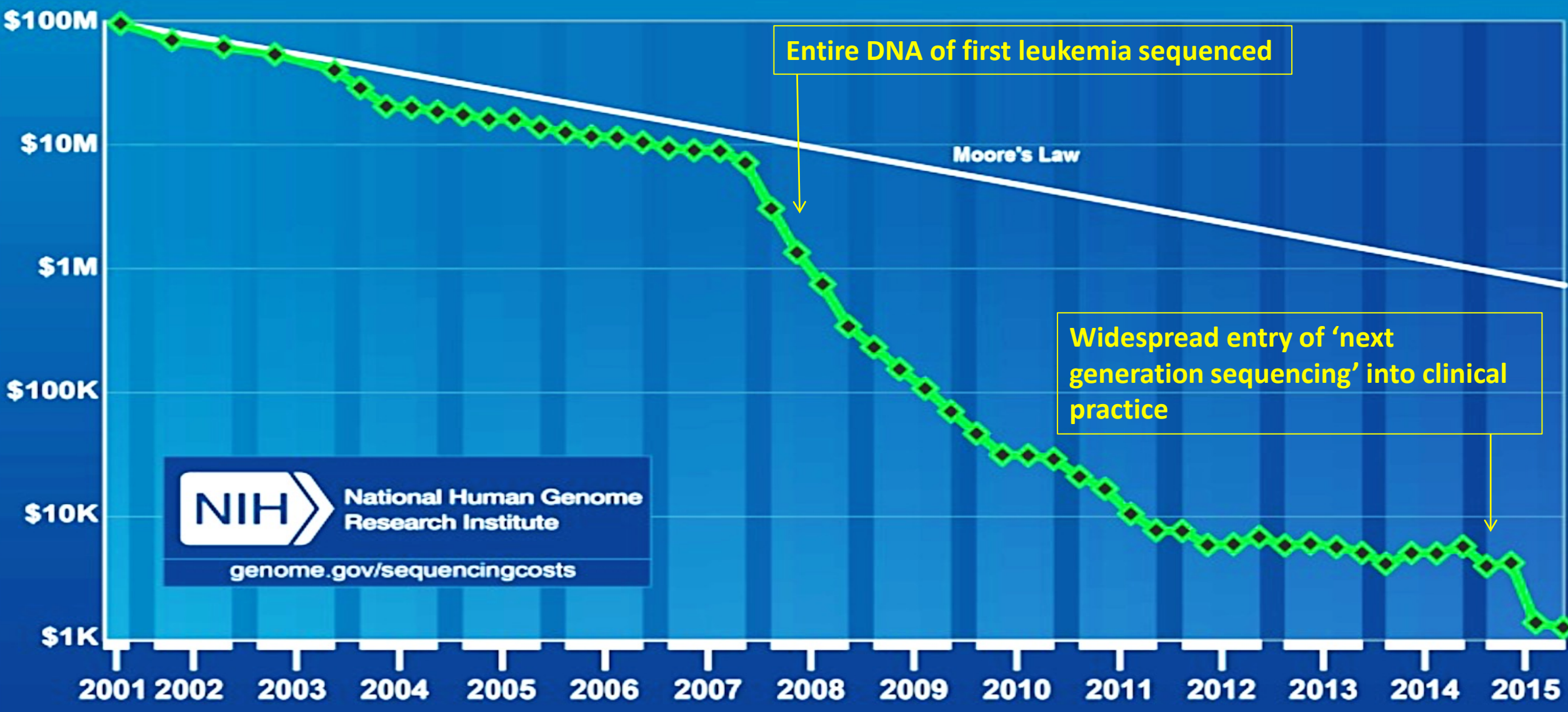
Gene expression profile
Morphology

Genetics

Clinical
Immunophenotype



Cost of sequencing the DNA of a single cancer case



NIH National Human Genome Research Institute
genome.gov/sequencingcosts

The diverse roles of genetic testing in hematopathology diagnosis

- To confirm a WHO diagnosis (e.g. *BCR-ABL1* in CML)
- To reveal a germline condition that may increase the risk of hematologic malignancy (e.g. *GATA2* mutation)
- To establish a clonal process (e.g. *TCR* rearrangement in PTCL)
- To provide prognostic information (e.g. *TP53* mutation in MDS with isolated del5q)
- To predict response to a targeted therapy (e.g. *FLT3* mutation)
- To interrogate the biology of complex or unusual cases (e.g. clonal architecture, disease progression, relationship of two neoplasms)

What we will be learning in this Workshop

- What genetic testing should be done NOW in order to correctly diagnose and classify hematopoietic neoplasms and guide appropriate therapy?
- What else does genetic testing tell us about the biology of hematolymphoid neoplasms?
 - May impact future classifications or therapies

Forums for learning in the Workshop

- 7 keynote lectures from experts in the field
- Interactive Round Table discussion covering issues of implementing genetic testing
- 2 Lunch symposia and an evening symposium sponsored by Seattle Genetics, Archer Diagnostics, and Nanostring
- 350 great cases submitted by all of you!
 - Oral and summarized, with consensus statements on the current use of genetic testing from panel

2016 WHO Classification of Myeloid Neoplasms and Acute Leukemias

Myeloproliferative neoplasms (MPN)	Sessions 4 & 6
Mastocytosis	Sessions 4 & 6
Myeloid/lymphoid neoplasms with eosinophilia and gene rearrangement (<i>PDGFRA</i> , <i>PDGFRB</i> , <i>FGFR1</i> or <i>PCM1-JAK2</i>)	Sessions 4 & 6
Myelodysplastic/myeloproliferative neoplasms (MDS/MPN)	Sessions 4 & 6
Myelodysplastic syndromes (MDS)	Sessions 4 & 6
Myeloid neoplasms with germline predisposition	Session 1
Acute myeloid leukemia and related precursor neoplasms (AML)	Sessions 3 & 7
Blastic plasmacytoid dendritic cell neoplasm (BPDCN)	Sessions 4 & 6
Acute leukemias of ambiguous lineage (AUL, MPAL)	Sessions 3 & 7
Precursor lymphoid neoplasms (T-ALL/LBL, B-ALL/LBL)	Sessions 3 & 7

2016 WHO Classification of Lymphomas and Histiocytic Neoplasms

Mature B-cell neoplasms	Sessions 2 & 8
Mature T- and NK-cell neoplasms	Sessions 2 & 8
Hodgkin lymphomas	Sessions 2 & 8
Immunodeficiency-associated lymphoproliferative disorders	Sessions 2 & 8
Histiocytic and dendritic cell neoplasms	Sessions 2 & 8

“Pre-malignant” clonal proliferations

CHIP, CCUS, ICUS, MBL, MGUS	Session 5
-----------------------------	-----------

Virtual slides for Workshop cases visible at:

<https://visoar.org>

Login: your email address

Password: **SHEAHP17**

All Workshop presentations will be posted online at the SH Website after the Workshop

Round Table Discussion (Friday 2 pm)

- Practical issues surrounding the regulation, reimbursement, and reporting of molecular genetic testing in hematologic neoplasms

**Submit questions for the panelists
by Friday morning to:
shworkshop2017@gmail.com**



Surveys coming soon for
hematopathology fellowship directors & ABP
hematopathology diplomates doing MOC
reporting this year!



- **Goal:** To better harmonize actual practice of hematopathology, hematopathology training & requirements and board certification testing
- **Fellowship directors:** L 👁️👁️ k for email notification mid-September.
- **Hematopathology diplomates** (since 2006): Survey is part of larger survey you will be notified about when you do MOC reporting this fall.
- **Thank you for your cooperation! We need your help**
- Results will be published for all to see.



Welcome to the 2017 Society for Hematopathology Workshop!

